

Travel

The Eastbury Hotel BY Dawn Maria France



Photo © D .Grant YWL Magazine .

Photo © The Eastbury Hotel.



“Put down your iPhone and treat yourself to a stay at the award-winning Eastbury Hotel.”

Surrounded by vast expanses of lush countryside, green valleys ancient and picturesque buildings, a splendid abbey, chocolate box almshouse and two castles (one of which was built by Sir Walter Raleigh), Sherborne the ancient capital of Dorset, has a number of attractions to entertain couples and families alike. Take a walk on the high street, as I and my colleague did, and you witness individually owned shops and boutiques and antique shops.

Sherborne is known for hosting the Pannier Market, on Thursday and Saturday where many bargains can be purchased. As a hideaway, Dorset has a reputation for fine arts and a wealth of history.

A Place to Stay A fine base to stay while in

Sherborne as part of a well-earned weekend break, forget Teams meetings, put down your iPhone and treat yourself, to a stay at the award-winning Eastbury Hotel.

The former gentleman's home in the 1920s is now a relaxing and quintessentially home-from-home stay in the heart of the town, within easy walking distance of the Abbey and main shopping street. It makes an ideal location for exploring Sherborne, and you can bring your four legged friend too, as the hotel is dog-friendly.

The hotel has a welcoming charm, with a characteristically individual interior style palette. This includes a striking marble fireplace, which is a main point of interest in the lounge, and sofas to melt into after a day's sightseeing.

Room with A View

The well-appointed twin Victorian Garden Potting Room, with its own entrance, was a real treat, nestled among lush hedges, trees, flowers and a walled garden at the back.

The room was spacious, decorated in a soothing green and white colour palette. The suite included delightful touches such as fresh milk, a Smeg fridge, and cups decorated by Arthouse a charity that supports adults with learning disabilities. A decanter of sloe gin is provided in each room which is a nice touch, along with the private patio space, and a mirror TV. The suite was modern elegance at its best.

The Garden Space

The Garden is large and is very impressive. This unique space includes places to play tennis, badminton and



The Eastbury Hotel — Travel: Luxury Bolthole



croquet in the warmer weather. Many striking shrubs punctuate the garden. There are chances to dine inside and out in the warmer months, but even without the sunshine, it was a beautiful sight to see while dining.

At the bottom of the garden is the delightful pod, ideal for private meals or even as an outdoor seating area, which leads back up the garden to the 2AA Rosette restaurant. I liked the idea of the Pod, which would be great for couples who fancied private dining or for an anniversary or special treat.

Dining Appeal

After a day's sightseeing, on heading for dinner, our waiter Sam served us a well-executed meal with locally-sourced bread baked and delivered every day. Fresh supplies from the garden herb patch are utilized within the food served.

The food is exquisite, full of flavour to the taste and is locally sourced where possible. The

menu included classic British dishes that were creative and inventive, highlighting the chef's artistic flare.

The main meal of the day, breakfast, is served in the same room, and includes à la carte options and a continental choice. Again, the food is sourced locally where possible.

While enjoying your breakfast, you're able to take in the sight of the hotel's appealing garden.

The Spa Appeal

Late in the afternoon, while my colleague explored more of Sherborne's renowned antique shops, I decided to treat myself to some R & R, and headed to the Seasons, a bijou spa nestled at the bottom of the hotel's walled gardens, away from the jostle of our 24-hour lives. The spa includes a range of treatments offered in two treatment rooms and a couple's therapy room.

The spa also offers exclusive use, bookable by the hour, which includes

use of the wet spa, an indoor hydrotherapy tub, sauna, jacuzzi and shower.

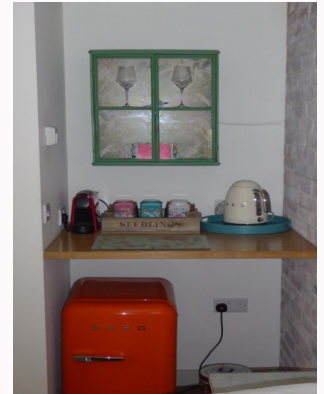
I eventually choose to have the Naturally Gaia Facial, described as a healing treatment. It did not disappoint. Therapist Molly ensured my face was left bright, smooth and not shiny. My neck felt free from knots and my hand massage was a real treat for my tired hands.

The Wow Appeal

A peaceful haven with a beautiful garden, outstanding dining and individually decorated throughout with quirky, fun touches and special treats such as sloe gin in all rooms. An ideal stay for a relaxing break.

Fact Box

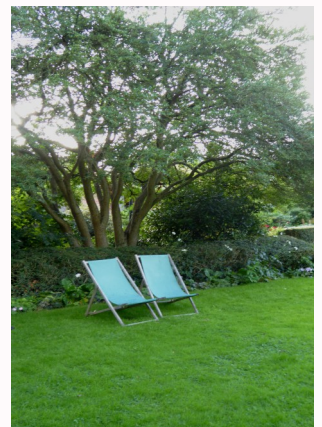
The Eastbury Hotel and Spa, Dorset. A country house hotel with 2AA Rosette restaurant and spa, with beautiful gardens, in the heart of historical Sherborne. Families and friends can also opt to stay in the hotel's fully-refurbished, charming, 17th century, stone Eastbury Cottage. The cottage is self-catering but guests can dine in the main hotel restaurant and use the spa. Prices start from £600 per night off-peak and £800 peak season at Eastbury Cottage. Based on 2 people sharing a minimum 2-night stay.



For information about The Eastbury Hotel:

www.theeastburyhotel.co.uk

“The food is exquisite, full of flavour to the taste and is locally sourced where possible. The menu included classic British dishes.”



YWL Travel Nov 2022